



Wandle Valley Forum

NEWS UPDATE

Issue No.7

Sept 2013

Forum AGM Thur Oct 10 - 2013 Conference Report - Wandle Trail issues - Planning concerns - Forum cleans-up - New Walks - Culvers Lodge progress - Watermeads – Whoops Incinerator!

COMMENT

We came. We saw. We were consulted.

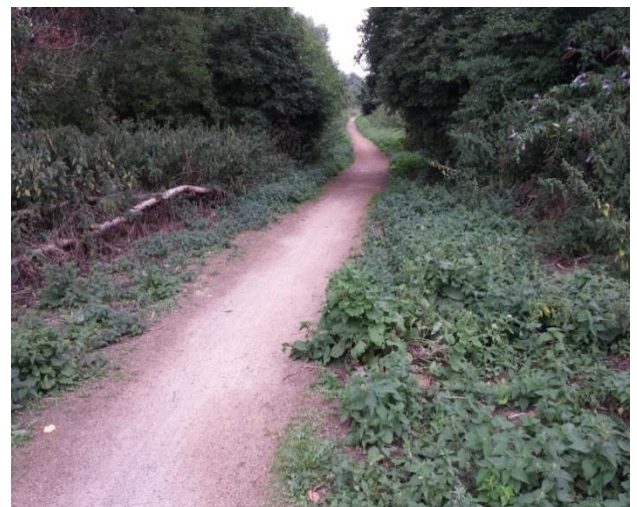
As will be clear from the rather too copious articles below, consultation on a key WVRP project seems to have resulted in some confusion and a little consternation amongst some Forum members. The consultation's conclusions about Wandle Trail widening, (explored in detail below) caused some dismay amongst members when they learned what they had in effect, signed up to. This comment is about being aware of the pitfalls of consultation, trying to avoid them in future and how controversy is handled. In this case it is not difficult to see how misunderstandings can arise. Respondents regard the WVRP and its partners, including the Forum, which is independent, as all working to worthy aims that no one could

possibly disagree with - and in principle, we are. However in the real world, even when all parties want what's best for the WVRP it is still possible for views to diverge – as has happened. This is no one's fault and it is being considered carefully by the WVRP's CEO who has been at pains to balance points of view and understand what happened. I hope an agreed solution can be found with minimum disruption to the schedule. But it is incumbent on Forum members to approach consultation as informed and alert as possible, whilst those carrying out consultation exercises will get clearer direction if presenting context, aims, options and setting out proposals in a way that can easily be visualised and understood. **BSJB**

Upgrade for Wandle Trail

It has always been a basic principle in the development of the WVRP that its varied landscape character should be respected and protected when enhancements are planned. Which is why the proposed hard surfaced 2.5m widening with a further 0.5m vegetation cut back either side, proposed for the Wandle Trail in Poulter Park and the Trewint St-Plough Lane section in Earlsfield has caused quite a stir amongst local people.

WVRP CEO, Peter Wilkinson, expresses the view that for this particular project the priority for the WVRP is to increase access to encourage more people into the Park. This is clearly a laudable aim which provides easier access for all wheeled vehicles, (cycles, wheelchairs and buggies). In doing so it is anticipated to encourage visits by people intimidated by the



isolation of the current Trail.

Whilst the Forum endorses that logic, and the aim of increased accessibility and safe

cycling routes, many local people have expressed one major underlying reservation: *yes improve access for all but only up to the point where that increased access starts to damage the very thing you are giving people access to.* In the view of many this is exactly what the new path specification will do, especially in the Trewint St-Plough Lane stretch where the total park width is only 30-35m and is a Local Nature Reserve. This is also felt to be consistent with the aims of the WVRP. (Remember the Forum Chair and Vice Chair are WVRP Trustees) Members of the Mitcham community tell us they feel much the same way about similar proposals for Poulter Park. So for now the Forum has agreed to respectfully disagree with Peter on this issue (although it is only one issue amongst many others that are welcomed and progressing smoothly.

It is important to state that this is not a case of cyclists against the rest - far from it. There are bike riders, as some prefer to be

referred to, on both sides of the debate. What is also important is that no one has reported any significant problem on this stretch of Trail, quite the reverse in fact – courtesy reigns even as one biker pointed out, if there is the occasional splash of mud when wet.

In discussion with Peter Wilkinson, he outlined two options:

1. Proceed with current timetable in line with the current TfL agreement and resolve the design as best we can.
2. Slow down to take the Weir Road debate via the potential mini-inquiry led by a WVRP board sub-group, meaning works won't start until next spring.

In spite of the timetable urgency the Forum believes it is important to get this right, rather than hurry to a compromise no one is happy with.

If you have views on either side of this debate please email me and/or Peter Wilkinson asap.

BSJB

Wandle Trail - the Upgrade Issues

Latest comments and reflections of local people on the Trewint St – Plough Lane section of Wandle Trail. NOTE: This doesn't pretend to be structured qualitative research, just views expressed and some responses to them. We are pleased that the Regional Park CEO has agreed to consider the issues raised.

1. Most people who responded to the issue of the WVRP specification for the Wandle Trail regarded it as being too wide at the proposed 2.5m (plus veg cut back), including some cyclists. And most people were not in favour of a hard surfaced path although it was favoured by some.
2. Many thought there was no need for any change except to improve maintenance a little.
3. There was no conflict observed by users of the Trail between cyclists and other users in fact there seems to be very courteous relations between current users of all types and the present volume of traffic is not seen as a problem.
4. It was noted that there seem to be no projections or research data on current and forecast useage of the route which seem to be an essential input to plans.
5. Point 4 poses a question over the prudence of spending large sums of money for something that some regard as a degradation of a nature reserve and is seen as unnecessary by local people.
6. There is an emerging view that funding on this scale would be better spent if contributed to the more costly Earlsfield link. It is assumed on evidence gathered so far that this would be welcomed by all sectors of the community as better value and money well spent on a necessary link.
7. We are always in favour of extending safe routes for walkers, cyclists, wheel chair and buggy users to provide access to ALL sections of the community in relation to the Wandle Trail with ONE exception - that the very thing to which access is being given is not itself irreparably damaged by the provision of that access.
8. The Trewint St – Plough Lane section of the Wandle Trail is regarded by most locals as a very rare, precious and fragile wilderness that has long been appreciated by them and many cyclists. It has always been a tenet of several Wandle Valley Forum community groups i.e. Wandsworth Society /MCGC&H that the special and varied character of each section of the WVRP and Wandle Trail in particular is recognised and respected. The current proposals do not take this into account. In fact the diverse character of the WVRP was seen as one of its unique and most appealing features by those responsible for developing the concept of the WVRP.

9. If the qualities of each section's special character are not recognised by those responsible for safeguarding it, it will place a question mark over the aims of the WVRP Management and its good reputation generated by progress in other areas.

10. Several people were afraid that a hard surface would encourage faster cycling and therefore put other users at risk.

11. Yes some people are intimidated by the Trail's isolation but this is a unique open space offering a glimpse of the countryside in a vast city conurbation. That's why it is tranquil and a Nature Reserve and why it is passionately defended by local people. However that is not to say there is no room for some improvements to the path, fishing points, gateways and signage.

12. The format of the research for the Trail project that the Wandle Valley Forum facilitated has left several people wondering how the conclusions were reached when they seem contrary to popular opinion. If this is partly due to TfL technical constraints this should be made clear. It is therefore essential that its findings and any given parameters are published asap.

13. Views similar to those given for local residents of the Weir Rd section have been expressed by Mitcham community groups in relation to Poulter Park.

NOTE: Three pages of comments have been collected and are available on request.

Bruce St. Julian-Bown. Chair Wandle Valley Forum

4 Sept 2013



The 'How Green is Our Valley' Conference

It seems like ages ago already but the Forum's "How Green is Our Valley" Conference of June 19 has been and gone and judging by the response from participants it was well attended (75) and well received. As its producer it's really not up to me to say but I will because it is a reflection of a supreme effort by the Forum's Executive committee, who helped plan, prepare, manage and fund the event. That it went so well is therefore thanks to them and the Forum as an organization demonstrating that it can take on a challenge and meet its quite ambitious role. The primary aim of the event

was to give the CEO of the Regional Park, Peter Wilkinson a platform to announce the status of the WVRP and its tangible development plans and he had much encouraging news to tell us. The event was also timed to allow for the announcement of the Living Wandle Landscape Partnership HLF bid results, so **Stephen Crabtree**, the LWLP programme officer and **Jerry Birtles** (Wandsworth Council Parks Officer) had the pleasure of confirming for us the award of the rest of the £2.4m grant. So now projects such as the Morden Hall wetlands boardwalk

and Merton Priory Museum can proceed. We were also informed of the award of £390,000 from Mayor Boris's Big Green Fund, a herculean effort by Peter Wilkinson and partners that will open up the currently fenced off Watermeads area next to the Hub stadium, generously being opened up by the National Trust who are landowners. The habitat of the Wandle there will also be prepared for potential re-introduction of the water vole. Add to that a TfL award to the WVRP for upgrading the Wandle Trail (see other article) in several places and funding for a proper survey of the Earlsfield missing link and we have a whole procession of projects up and down the park.

In addition **Bella Davis** of Wandle Trust told us about the Catchment Plan and we had a detailed update on Merton Priory's grand museum plans from **John Hawks**, and the remarkable Beddington Farmlands avian reserve described by **Peter Alfrey**, we heard from **Taus Larsen** of architects ZedFactory of advances in home design in the 10 years since their BedZed estate was built.

Forum Clean-ups Funded Conference

The Forum didn't just produce the event, it also has been helping with park clean-ups and enhancements. Forum members attended one clean-up organised by Wandle Trust and mounted its own first clean-up on the perimeter of Mitcham Common. (See photo).

Crew from L>R
>
Melanie Nunzet, Marianne Rasmussen, Eileen SJB, Lucy Gannon- Groundwork Cleaning up Mitcham Common borders.

One key advance being to integrate solar panels into the building structure rather than sticking them on top of tiled roofs.

The Forum itself announced its progress since last year towards becoming formally constituted with member registration (a group membership fee being £20) and we signed up several members at the conference. We also now, for the first time have an official bank account and a highly effective Executive Committee.

In summary I'd like to say thanks to the Forum's Executive team members: **DeNica Fairman, Angela Gorman, Melanie Nunzet, Marianne Rasmussen, Zigi Sinnette, Ivan Scott** for helping organise the event, thanks to all our speakers for volunteering their time and to **Peter Wilkinson** for coming up with the idea, and thanks to all you stakeholders, partners and friends for supporting it by being there.



Caring for Wandle Valley Park

As mentioned above the Forum has at last got mud on its own boots by taking part in two clean-ups funded by **Natural England**. The first was in support of Wandle Trust on the already mentioned Weir Road Industrial Estate stretch of the Wandle Trail near Earlsfield and Wimbledon Park. A fine collection of items including a scooter and chunks of car were extracted by the river wader platoon. The second was organized with **Lucy Gannon** and **Melanie Nunzet** north of the goat Pub. Because of this and our potential to do this on a programmed basis we have been awarded our own set of

clean-up kits, enough for a platoon of 6. (Litter pickers, safety jackets, gloves, bag holders and first aid kit).

At our next Forum meeting the Agenda will include discussion on whether a scheduled programme of clean-ups has members support and how we might manage it, in partnership with others.

There is also the opportunity for both the Forum itself or individual member groups to undertake projects on their own patch or elsewhere, and also potential to simply join existing clean ups as undertaken by Wandle Trust.

Wandle Valley Forum AGM – Thurs Oct 10

Our next meeting is the AGM and all Forum offices are open for nomination and voting. After much consideration, our Vice Chair **Angela Gorman** is stepping down, although remaining a valued member. We will be seeking a new Vice Chair, whilst I'm prepared to stay for one further term, depending of course on the wishes of members and assuming we approve the new constitution which permits a three year chair term. So please send in your nominations for all posts including Treasurer and Executive Committee and possibly some other posts such as membership manager, clean-up commander and Newsletter producer etc?

I would like to thank **Angela** for a decade of being the backbone of the Forum and the most knowledgeable, professional and longest serving Forum member in the near decade since it evolved. If we were the Starship Enterprise she would be Scotty and Mr Spock rolled into one!! Well OK Capt Kirk as well!! (That's a complement Angela!). We wish you all the best in your career and thank you for your knowledge and wisdom and hope you continue to be a key player in the WVForum.

>>>>> P L A N N I N G U P D A T E <<<<<<

We all know if you don't ask you don't get. But sometimes you do ask and you still don't get! Well that's life and shouldn't mean our disappointments put us off pointing out how inappropriate some major developments are, especially in the context of a Regional Park.

1. The Ram Brewery Development

We have already commented on this controversial development that straddles Wandle Valley Regional Park and has now been approved by WBC. It is critical for the completion of Wandsworth town centre's regeneration and does open up what we hope will become the heart of the previously off limits part of the town centre. The improved access to listed buildings and parts of the river and its banks are welcomed and only overshadowed (pun intended) by the excessive mass of the 36 floor tower block and height of most of its other buildings.

The original consultation on the scheme was partly sold using computer generated graphics that distorted the impact of tall buildings on what is largely a conservation area. When questioned at last year's public inquiry a defending barrister claimed the images were produced by the

most experienced company in the field who clearly knew what they were doing. The Wandsworth Society challenged this on several grounds including pointing out that the company's skill was in its ability to produce images likely to present tall building as having minimal damaging visual impact and therefore more likely to be approved in spite of notional conventions on camera lenses and perspective.

We all applaud the availability of affordable housing and a decent town centre but not the overwhelming tower (redesigned to be uglier) on the Wandle bank.

The replacement of an adjacent High St council office block, already clearly too high for the High St, building line, by a housing trust block that is even taller exacerbates the degradation of the townscape two doors away from historic All Saints church.

2. The Incinerator

The Forum supported the 'Stop the Incinerator' campaign adjacent to Mitcham Common but failed to stop Eddie Lister (ex WBC leader, now Boris's No.2) approving this colossal building which will dominate the heart of the WVRP for decades, although possibly less if it goes bust for lack of feed stock. The following was the forlorn last effort by the Forum chair. Although it's not built yet is it?. Councillors were caught between the rock of the EU legislation and the hard place

of keeping the regional park green, a more farsighted approach might have opened the door to greener technology and input from the local anaerobic digestion experts at the ZedFactory. And to be fair as **Andrew Judge** (Merton Cllr/WVRP Trustee said: it was open to all technologies. But how much research was put into the brief and how could new technologies be encouraged to pitch. The local community won't forget - how many demos happen in Sutton? >

Dear Mr Johnson,

Thank you for the reply you sent to the letter I passed you at your recent Voluntary Group reception at City Hall. Several thousand members of the Wandle Valley Forum's 50 plus constituent community groups are grateful for your holding planning consent for further consideration.

My last letter about the commissioning of new and cleaner waste processing technology in Wiltshire seems to have anticipated recent news of the commissioning of further new advanced gasification plant and other waste processing technologies, as does the suggestion that subsidies or guarantees be granted by government or GLA to encourage councils loath to take a 'risk' on new technology.

However the size of the 'risk' is diminishing as councils such as Tees Valley supported by subsidies, gain the confidence to broaden the technological options for waste processing systems to help meet the requirement that 15% of UK energy is derived from renewables (inc waste) by 2020.



The letter Boris is holding was handed to him by your Chair 9 Aug 2013 at City Hall

The advanced gasification process is claimed to be a more efficient energy-from-waste process than incineration and has (according to Westinghouse, the manufacturers) a lower environmental impact, producing 42% less CO2 emissions per MWh. They also claim that their advanced gasification-based plant can produce a number of different outputs, including electricity, heat, chemicals, fuels, or renewable hydrogen that could be used to power low-carbon vehicles.

Surely the installation of even the newest 'old technology' poses just as much financial risk to councils because of the competitive challenge from newer more efficient processes and the forecast future risk of declining feedstock supply. This could see expensive incineration plant struggling to survive five years from now.

And we haven't mentioned yet the benefit to local communities from markedly less toxic emissions which clearly will benefit and reassure the local community. Whilst I, like most lay people, cannot set out the detailed economic risk surely it is worth getting the independent consultants to review data from the new technological options to ascertain the key comparative efficiencies and emissions. This cannot be left only to the waste contractor even with the EA looking over their shoulder. (In fact the Environment Agency should perhaps be charged with encouraging newer cleaner technology, if they don't at present).

Finally you said to me the Wandle Valley Regional Park is high on your agenda, and its concept is consistent with your aim to improve the quality and quantity of public open space in Greater London. So you must share our anxiety that constructing a building on the scale of the current proposal makes a serious mockery of those aims. The brilliant and highly original rationale for a regional status park in an urban area would clearly be undermined if at its very heart a waste processing plant dominates the skyline from the parks perimeter.

I hope you will agree that if not an alternative location for the incinerator, better still an alternative cleaner technology is a solution that warrants serious attention. The community benefits, eventually council tax payers benefit, and it will add a more vivid shade of green to your legacy. I know it's a tough one – I hope you find a way to handle it

Best Regards

Bruce St. Julian-Bown

Chair, Wandle Valley Forum

In the end too tough for the Mayor and his deputy to find a universally acceptable solution.

3. Culvers Lodge

The Wandle's 'official biographer', **Bob Steel**, has been leading the fight to save the charming Culvers Lodge from being demolished. With support from Hackbridge residents and Forum members **Marianne Rasmussen, Graham Tope, Francesca Bellucci** and **Peter Wilkinson**. The para below is an extract from a recent Bob Steel email on current status.

'.....it would be a good time to formally update local councillors about the situation re the Lodge, especially as regards the possible future involvement of the WVRP in the medium term. I also wonder whether we might suggest an exploration of possible ways to start refurbishing the building to

make it habitable as a residence, so that possible use as warden's accommodation or other uses could be considered in the shorter term. At any rate it would be good to try to establish an agreed preferred future for the building as Cllr Drage has said to me he thinks Cllrs would be happy to see the building be taken on by a body like WVRP in the future. So hopefully we are pushing at an open door as far as saving the building from demolition is concerned'.

The Forum fully supports this initiative to save this perfect period home especially given its strategic location on the corner of Medland Close, a key link between the Wandle Trail and Beddington Farmlands.

Watermeads & Poulter Park. Bid winning projects

Project funding can get quite complicated and looking through my 10Gigs of emails I may not have got this quite right, that Boris's Big Green Fund is stumping up nearly £0.5m for **Peter Wilkinson's** WVRP Watermeads' project (right next to our conference venue). This project sits within the Wandle Valley Regional Park and the bid was led by Peter and a project development board. To this sum can now be added approx £100k from Viridor, with further funding from SuttonBC. Then there are the already discussed access improvements funded by TfL for the much agonised over Wandle Trail upgrade (to be delivered by SUSTRANS).

The great news is that there will be sensitively designed partial access for the first time in decades to the lush and mysterious, Watermeads and Spencer Rd Wetlands area of the Wandle wildlife

wilderness near Bishopsford Rd, at the north end of Poulter Park by the football stadium. It is currently fenced off about as delicately as Porton Down, with only glimpses of the water and river areas beyond the railings visible. This will enhance the Wandle Trail considerably, subject of course to the previous concerns on Trail upgrade specification, from there south to Goat Road through Poulter Park.

New flood storage capacity will be created and habitats will be improved across the project area. Walking and cycling from surrounding areas will be improved to create better connections to the Wandle Valley and Wandle Trail. It will also help establish the Wandle Green Team so trainees can develop employment skills through supporting the delivery of the capital works and parks maintenance.

- See more at: <http://www.london.gov.uk/media/mayor-press-releases/2013/07/mayor-announces-2m-to-improve-london-s-green-spaces#sthash.5XBlueks.dpuf>

Reasons to be cheerful

Melanie Nunzet is pleased to report that her July 2013 walks were a great success. They were arranged at quite short notice and celebrated the centenary of a rally of suffragettes in Hyde Park on the very same day in 1913. There were 36 walkers on the morning walk and here is a picture of them under the beautiful wing nut tree in Beddington Park close to the Grange. In the early evening a smaller group explored the green spaces of Mitcham, including (pictured) the Peace Garden at the Canons and Mitcham Common. The colours of the suffragettes were purple, green and white and as can be seen, the beautiful flowers on the Common perfectly matched the outfits!

Melanie's Walks

Melanie Munzet leads these charming and informative walks contact tel: 07944 833605

Date	Meeting place / time	Walk description	Distance miles
Sun 29 Sept	Mitcham Junction, 11 am	Wandle Landscapes Walk – World Rivers Day. Walk to Carshalton, via Beddington Farmlands (the heart of the future Wandle Valley Regional Park) and Beddington Park. Birdwatching possible! Finish Carshalton Station.	3-4 easy linear
Sun 27 Oct	Mitcham Junction, 11 am	Walk around Mitcham Common. Finish at Mitcham Golf Club for Sunday lunch. Please call or email for details. Must be booked by Friday 11 October.	3-4 easy
Sun 10 Nov	Mitcham Junction 10 am	Remembrance Day walk around Mitcham and the Common with parade to finish. Possibility of lunch at the White Hart (near Mitcham tram stop).	3-4 easy linear
Fri 6 Dec	Meet by St Mary's Church, Church Rd, Wallington 10.00 am	Visit to the Honeywood. Walk through Beddington Park and Grove Park to the Honeywood Museum by Carshalton Ponds. Cost (to be advised) will include mince pie, tea/coffee and donation to museum. Return to Beddington Park at the end of visit. Must be booked in advance please call or email mlnnuzet@gmail.com.	2-3 easy
Sat 7 Dec	Morden Underground 11 am	Frost Fair Carshalton. Walk along the Wandle Trail and enjoy the stalls, a hog roast and live music by Carshalton Ponds. Finish Carshalton Station.	4-5 easy linear

For all walks starting at Mitcham Junction meet at bus stop on bridge

Health Walks

Mitcham Common	Every Thursday 11 am Meet Mitcham Junction (bus stop on bridge)	Come and join Cathy or Liz for a 45 minute walk around the Common with refreshments at Mitcham Golf Club to finish.
Beddington Park	Every Friday 10 am Meet by St Mary's Church, Church Rd, Wallington	Come and join Melanie for an hour's walk around Beddington Park or Waddon Ponds. Refreshments available in Church after walk – contribution to church funds please.



Walkers at the Peace Garden, the Canons during the Suffragettes Walk, 26 July 2013

Wandle Valley

The WVRP Trust board is using the name 'Wandle Valley' rather than the Wandle Valley Regional Park for obvious reasons. It also avoids confusion with Wandle Park in Croydon and invites comparison with the Lee Valley perhaps hinting at the in justice of the precept the latter receives from all of us!

Projects in the Wandle Valley.

The following list comprises some of the projects at various stages of implementation implemented by the WVRP and its partners inc Wandle Trust, Merton Priory Trust, National Trust around the Wandle Valley . Further detail on most can be seen on the WVRP Website.

www.wandlevalleypark.co.uk including

- **Wandle Catchment Plan** – a comprehensive programme of projects defined by Wandle Trust for improving habitat and bio-diversity along the Wandle led by Claire Beford.
- **WVRP Greenways** inc: Wandle Trail upgrades and gap survey for the Weir Road And Poulter Park stretches.
- **Merton Priory Chapter House Museum.** Drawings are already completed for an imaginative and major building extension.
- **Morden Hall wetlands boardwalk**
- **WVRP Gateways projects** - several attractive Gateways to the regional park part of the Living Wandle Programme
- **Watermeads access plan WVRP** – a Mayor's Big Green Fund project opened up by National Trust managed access
- **Living Wandle Engagement Programme** – a full programme by Vicki Carroll and her team.
- **Waddon Ponds, Wetlands Habitat, £60,000 HLF bid award**
- **Wandle Park, Croydon:** a £3.8m development including a new 11 ton bridge

Watermeads visit report

Through Facebook I (MN) found out about a tour of Watermeads given by **Bill Dedman**, a long standing resident of Mitcham, who lives right next to one of the gates. Five of us met up on a sunny Sunday morning in August and Bill unlocked this secret garden for us! He led us on a very interesting and informative walk showing us the site of a snuff mill and the remains of Grove Mill. We also looked at a stone seat inscribed as follows: "This seat is placed on land, part of which was given in memory of **Miranda Hill** by some of her grateful and affectionate pupils. Born 1 May 1836 Died 31 May 1910".

Miranda is sister to **Octavia Hill**, one of the founders of the National Trust, who launched an appeal to save the Watermeads from becoming a factory estate. **Melanie Nunzet**

Books for sale (contact Melanie):

A History of Mitcham Common by Eric Montague, £5, reduced from £14.99

A Short History of Mitcham Common by Janet Morris, £2.50

A Dozen Interesting Plants on the Common by Janet Morris, £2.

Wandle Gateways.

As part of the wider Living Wandle programme, the WVRPT is starting to engage local people and groups over the plans to create a number of new 'gateways' to the regional park over the next 3-4 years. For those who are interested there is information

on the web site at <http://bit.ly/1eEwAkN> including copies of the two main reports that were submitted as part of the Stage 2 lottery bid. Also look out for stencil markings at all the potential gateway sites and join a discussion on Twitter at #wandlegateways

Your contributions?

We hope members will make use of this newsletter much more for their own promotions in the future. So how is this for a way to make it easy for you to contribute and that applies to all stakeholders, not just members? Why not send the editor (currently BSJB) your own letters of concern, ideas, aspiration, complaint or praise about any related issues. That after all is one of our the key functions (apart from being a consultee body) of the Wandle Valley Forum, to share information that serves to enhance and protect the open spaces we are passionate about. So, just copy me with your key communications. Common sense and legal conventions should of course be observed and the Newsletter Team that contributors could perhaps form will reserve the right to edit and omit what is inappropriate. Contributors should be aware of the approx. publishing dates. So contributions please by December 1st to bsjb@onetel.com

Come & Celebrate the Living Wandle

Morden Hall Park, Sunday Sept 29th 11.00am - 4.00pm

Check out the wonderful programme of activities that have been put together by the Wandle Festival team lead by Vicki Carroll and funded by the Heritage Lottery Fund. It includes:

- **Wandle Piscators – learn everything about fishing**
- **Wandle Trust – join the team that keeps the river clean and green**
- **Merton Priory Chapter House – the 1200 year history**
- **Dig up a bit of history yourself**
- **Guided walks – special editions of Melanie Nunzet's super walks**
- **Bat walk (not in the bat cave!)**
- **Duckathon –duck racing (but not with live ducks)!**
- **Waddon Ponds – all change for a greener more interesting and friendly park**
- **Make a hedgehog – really?**
- **Music in the Park with singer songwriter and local bard Dick Philpot**
- **Wandle Gateways – once explained they wilwelcome you to the Park**
- **River dipping and meeting creatures of the deep**
- **Wandle Flowing through Time – tell about your Wandling memories**
- **Wandle junior artists – paint what you see, the way you see it.**

It is all on the www.wandlevalleypark.co.uk website.

**Wandle Valley Forum AGM, Thurs Oct 10, 6.30pm,
William Morris Pub, Merton Abbey Mills.**

Space may be limited, so come early. Please complete attached membership form for your group so it can be formally registered as a member and bring to AGM or send with the registration fee. >>>

All views expressed are those of the editor or credited contributors.

NEWS UPDATE Editor: Bruce St. Julian-Bown. Chair Wandle Valley Forum. Contact: bsjb@onetel.com

Wandle Valley Forum Membership

Support our community network and the emerging WVRP

To join the 'Wandle Valley Forum' (WVForum) please complete the following:

Title.....Forename.....Surname.....

Organisation Name

Address

.....

.....

Post CodeApplication Date.....

E-Mail Address

Phone Number

.....

Would you like to be included on an email list for WVForum updates & information?

Please circle: Yes / No

.....

Please circle your interests:

Trees / Plants / Wildlife / Birds / Sport / Dogs / Cycling / Other.....

.....

I can offer help with:

Catering / Stewarding / Secretarial / River Cleaning / Other.....

.....

Subscription Rates (Please Circle):

Individual Rate £5

Organisation £20

.....

Payment:

BACS:

Barclays Bank - Account No. 90939056 Sort code: 20-57-76

(please put your name as reference)

Cheque:

Please post your cheque, made payable to Wandle Valley Forum, with this application form, to:

Melanie Nunzet, 24 Walsingham Road, Mitcham CR4 4LN